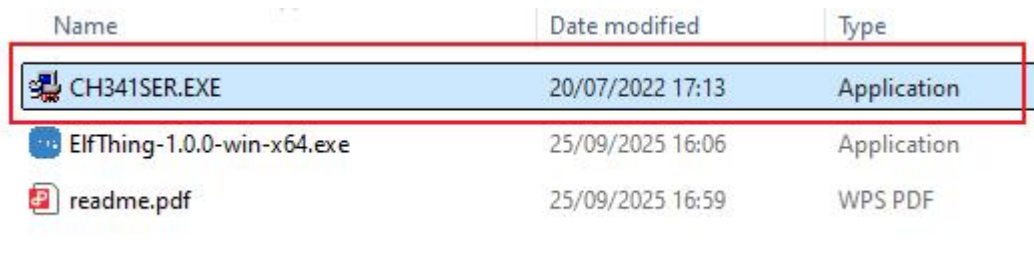


ElfThing Installation Instructions

1、Install the driver

(1) Double-click to install the driver CH341SER.EXE



Name	Date modified	Type
CH341SER.EXE	20/07/2022 17:13	Application
ElfThing-1.0.0-win-x64.exe	25/09/2025 16:06	Application
readme.pdf	25/09/2025 16:59	WPS PDF

figure 1-1

(2) When the installation pop-up window appears, select "Install". If it shows garbled characters, choose the first option

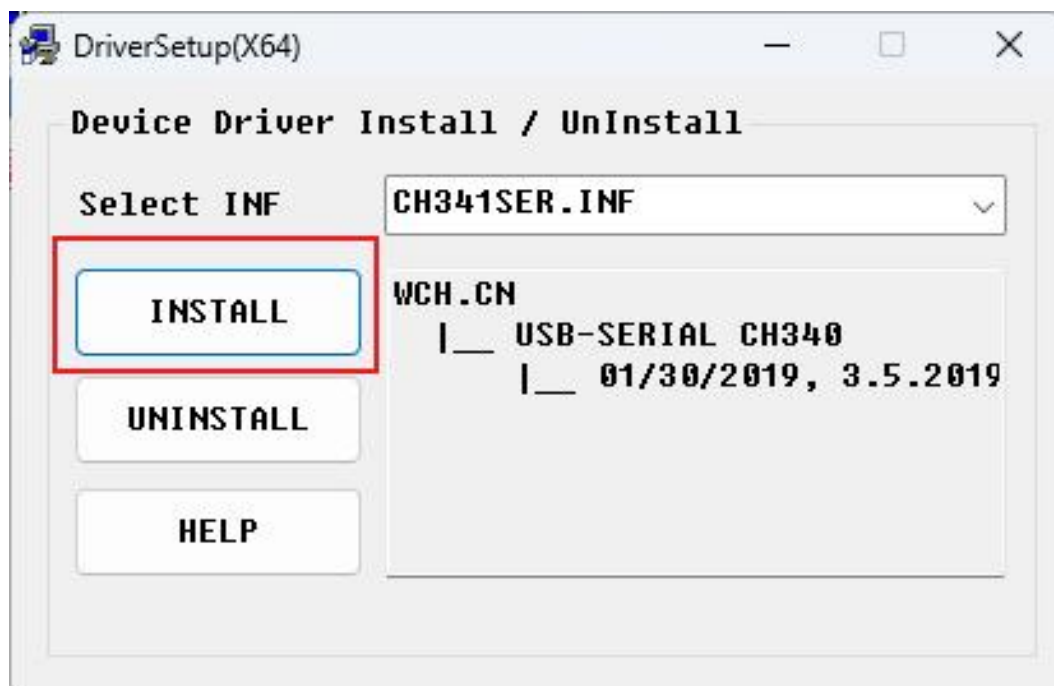


figure 1-2

(3)The installation was successful when this page was displayed



figure 1-3

2. Install the ElfThing software

(1)Please first confirm that the first step of installing the driver has been completed

(2)As shown in Figure 2-1, double-click to run the installation program. After running, the installation program interface will appear, as shown in Figure 2-2. According to your own needs, select to install for anyone using this computer or only for the current user, and then click Next.




Name	Date modified	Type
 CH341SER.EXE	20/07/2022 17:13	Application
 ElfThing-1.0.0-win-x64.exe	25/09/2025 16:06	Application
 readme.pdf	25/09/2025 16:59	WPS PDF

figure 2-1

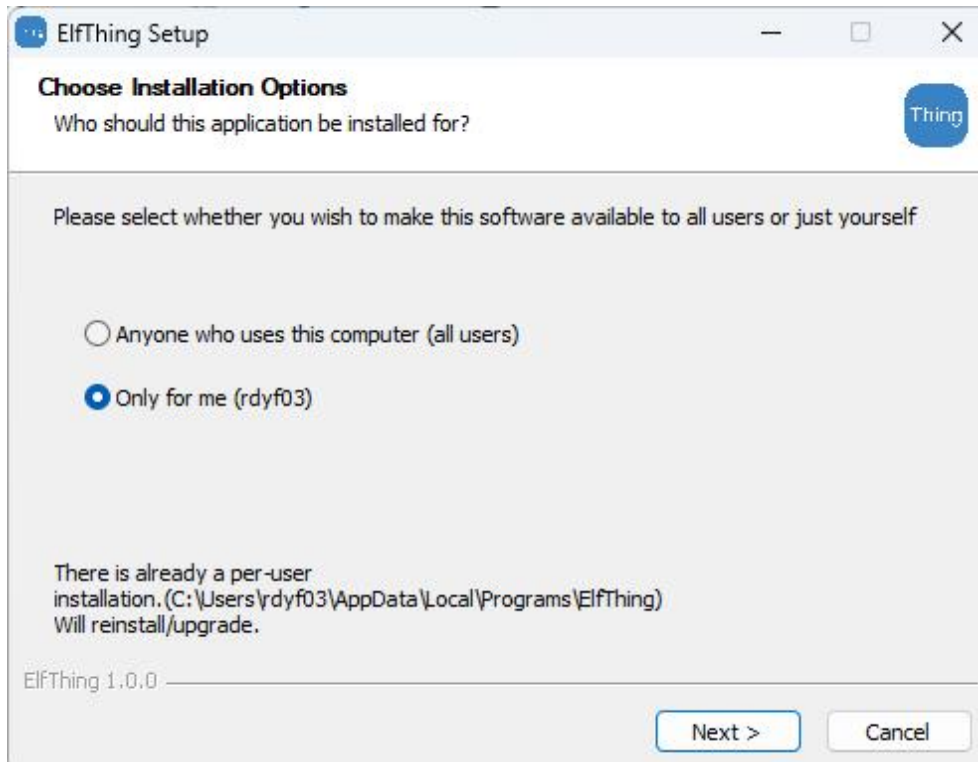


figure 2-2

Enter the selected installation location, as shown in Figure 2-3, choose the installation directory, and then click Next.

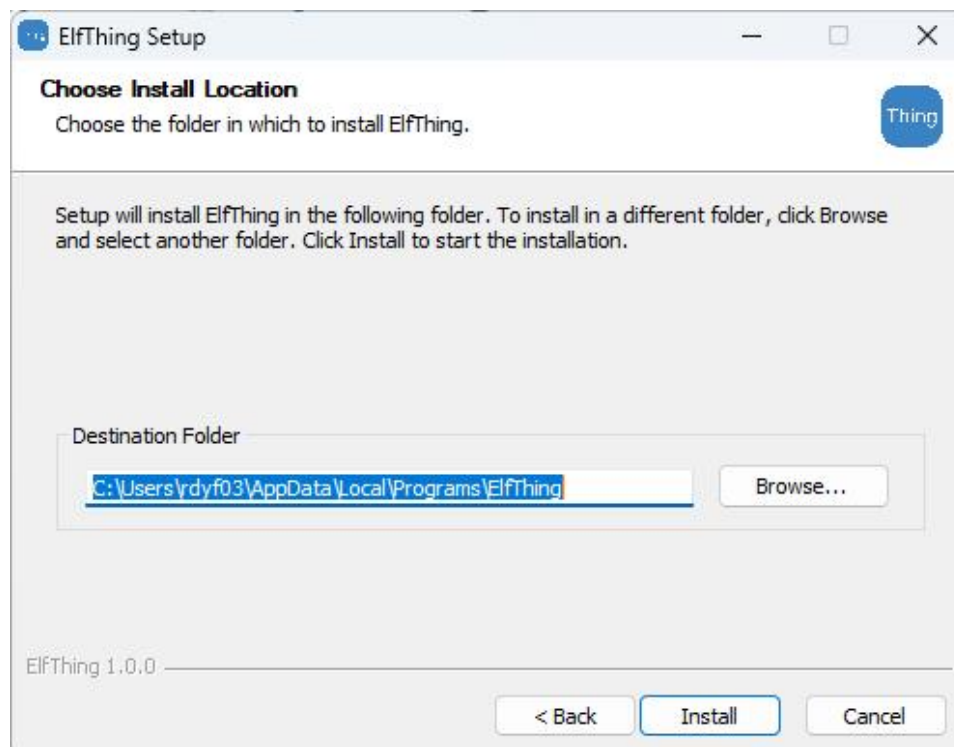


Figure 2-3

As shown in Figure 2-4, after the installation is completed, you will enter the installation completion prompt page. Click "Finish" to complete the installation steps

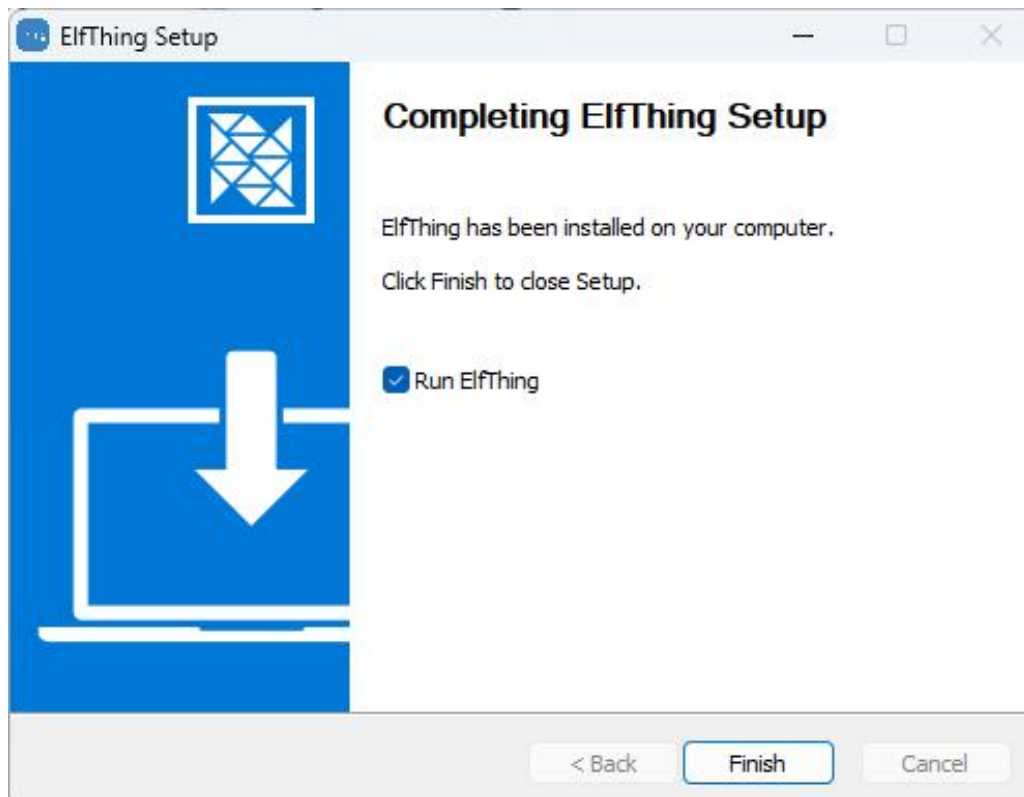


figure 2-4